

**Maine Department of Health
and Human Services**

OFFICE OF CHILD AND FAMILY SERVICES

JIM MARTIN, DIRECTOR
BOBBI JOHNSON, ASSOCIATE DIRECTOR
NORA SOSNOFF, AAG, CP DIVISION CHIEF

National Cost of Child Abuse & Neglect

The Perryman Group estimates that each occurrence of first-time child maltreatment costs the US economy about **\$1.8 million** in total expenditures.

OCFS Overview

Mission
Ensuring the safety of all Maine youth is our top priority. In addition, we empower families to help prepare youth for transition to adulthood and to access services that keep their family safe.

Vision
All youth in Maine will grow up to be productive community members. We achieve this by keeping youth safe, structuring services and supports to help create a successful transition to adulthood and by finding stable and permanent homes.

OCFS Overview

Practice
Policy
Legal

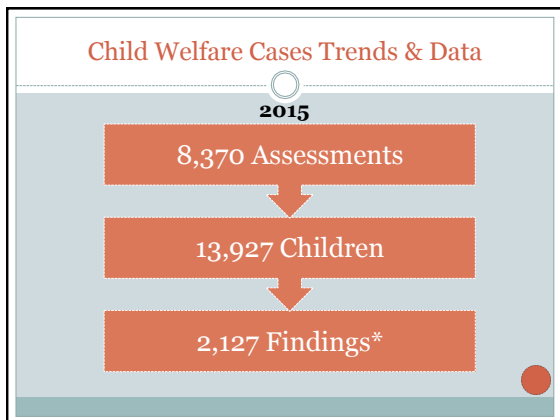
Mandated Reporting Trends & Data

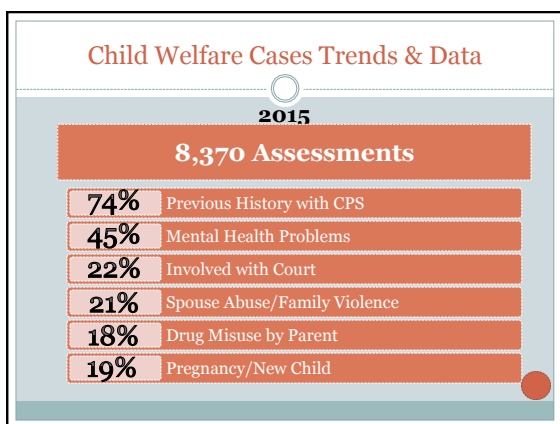
2015
18,613 Reports

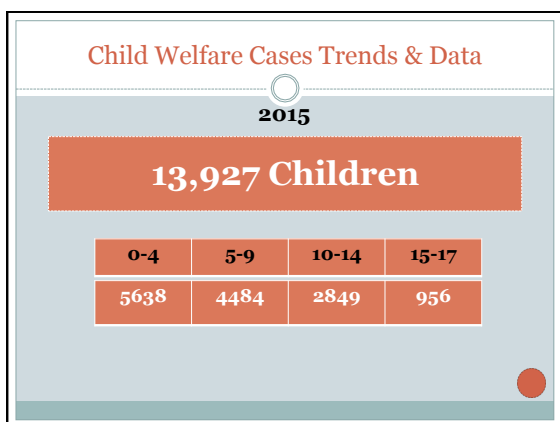
REFERRAL SOURCE - ALL REPORTS	
REFERRAL SOURCE	2015
School Personnel	19%
Medical Personnel	15%
Law Enforcement	14%
Mental Health Personnel	13%
Self/Family	11%
Social Services Personnel	8%
Anonymous	10%
Relative	5%
Neighbor/Friend	5%
Other	<1%
Child Care Personnel	<1%

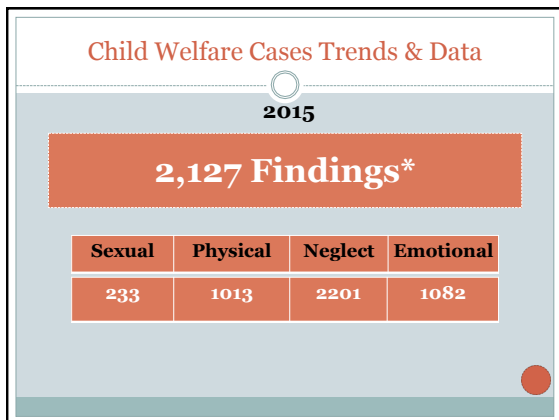
Mandated Reporting: Legal Requirements

- 22 M.R.S.A. § 4011-A(1)
 - Mandated Reports
 - "shall immediately report"
 - When one "knows or has reasonable cause to suspect that a child has been or is likely to be abused or neglected or that suspicious child death has occurred:"
 - Professionals (educators, health care, law enforcement, GAL, social workers, mental health, bus drivers, camp counselors...and more). See the [list of 32 professional categories](#) at 22 M.R.S.A. §4011-A(1).
 - ...AND...
 - "Any person who has assumed full, intermittent or occasional responsibility for the care or custody of the child . . .;" AND
 - "Any person affiliated with a church or religious institution who serves in an administrative capacity or has otherwise assumed a position of trust or responsibility . . ."







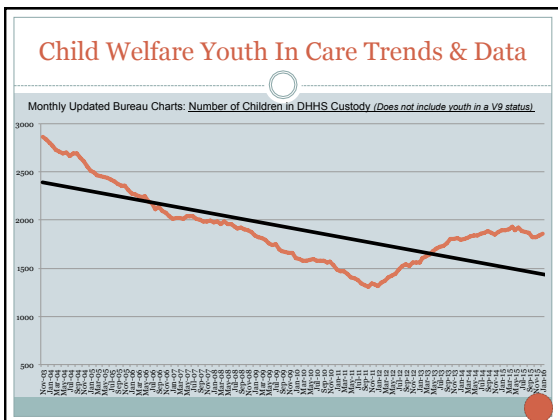


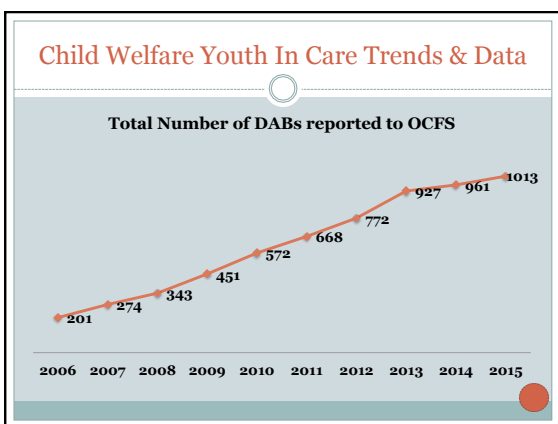
DHHS Response: Legal Authority

- 22 M.R.S.A. § 4004(2)(C-1)
 - In every investigation of abuse, neglect and suspicious child deaths, the Department must determine whether allegations against a person responsible for the care of that child are:
 - Unsubstantiated;
 - Indicated; or
 - Substantiated.

Child Welfare: Policy & Practice

- Substantiated means: the abuse or neglect by a person responsible for a child was of high severity.
- Indicated means: the abuse or neglect by a person responsible for a child was of low to moderate severity.
- Unsubstantiated means: after assessment, the Department found insufficient factual support for the abuse or neglect alleged in the report.





Youth In Care: Policy & Practice

The Bridging Program

- Collaboration between OCFS, Public Health Nursing (PHN) and the Maine Families Home Visiting Program to impact outcomes for families with children born substance exposed (DAB reports)
- Modeled after work led by Marjorie Withers and other community members in Washington County
- Implementation Date: March 14, 2016

Youth In Care: Policy & Practice

Eckerd Rapid Safety Feedback

Goal: identify children at high risk of abuse and/or neglect and ensure our interventions are providing immediate safety to address concerns

Relies on collaboration between child welfare caseworkers, supervisors and quality assurance staff

Kick-off: March 7, 2016

Youth In Care: Policy & Practice

IV-E Waiver Demonstration Project

IV-E	Waiver	Project
Positive Parenting Program (Triple P)	Matrix Model Intensive Outpatient Program (IOP)	Coordinated, concurrent and co-located services

Youth in Care: Legal Updates

- New Federal law: *Preventing Sex Trafficking and Strengthening Families Act*
- Mandates that children in state custody participate in age-appropriate extracurricular, enrichment, and social activities.
- Requires States to develop new policies, procedures, and training on addressing child sex trafficking victims.

Youth in Care: Legal Updates

- “APPLA” Another Planned Permanent Living Arrangement – This permanency plan is prohibited for children under age 16.
- Any child age 14 and older, should be consulted about their own case planning, and provided services to begin preparing for successful adulthood.

Youth In Care: Legal Updates

Maine law: “An Act To Align the Child and Family Services and Child Protection Act with the Federal Preventing Sex Trafficking and Strengthening Families Act”

Now requires requiring mandatory disclosure to:

Law enforcement authorities for entry into the National Crime Information Center database of the F.B.I. and to a national information clearinghouse for missing and exploited children

Youth In Care: Legal Updates

Maine’s Act To Align the Child and Family Services and Child Protection Act with the Federal Preventing Sex Trafficking and Strengthening Families Act

Mandates due diligence to identify and provide notice of child protection proceedings quickly to:

- Grandparents;
- Parents of a sibling of the child who have legal custody of the sibling; and
- Other adult relatives of the child, including any other adult relatives suggested by the parents.

Investing In Our Core Beliefs

- Child safety is first and foremost
- Parents have the right and responsibility to raise their children
- Children deserve to live in a safe and nurturing family
- All children deserve a permanent family
- How we do our work is as important as the work we do

Expansion of CPPC

- Community Partnerships for Protecting Children (CPPC) is based on 4 core strategies to support and strength at risk communities:
 - ❖ Building a Network of Services and Supports
 - ❖ Child Protection Services located in the neighborhood
 - ❖ Family Centered Practice
 - ❖ Shared Decision Making
- Currently 4 CPPC sites
 - ❖ York, Cumberland, Androscoggin and Penobscot Counties
 - ❖ Anticipate awarding grants to expand CPPC to additional counties throughout the state

Children's Advocacy Centers

Facility-based services which provide comprehensive, multi-disciplinary services to children suspected of having been sexual abused.



CONTACT US

- James.Martin@Maine.gov
- Bobbi.Johnson@Maine.gov
- Nora.Sosnoff@Maine.gov
